

GA-SS-C Standard Rivet

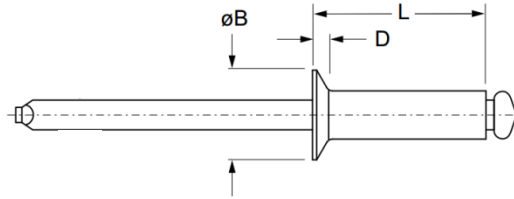
Countersunk head · Stainless steel body · Stainless steel stem
3.2 mm (1/8") - 6.4 mm (1/4")

Features

- Non-structural blind breakstem rivet designed for a wide range of applications
- Cost effective standard rivet
- Installs quickly and easily

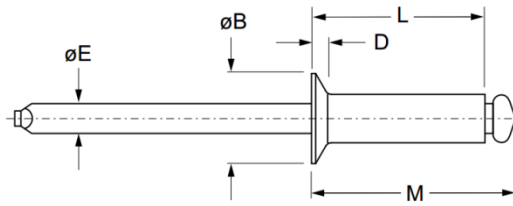
Material

- Body: Stainless steel 304
- Stem: Stainless steel 304



IFI Convention

Part No.	Size ø	Grip Range		Hole Size		L max.	øB -	D -	Shear (typical) kN	Tension (typical) kN
		min.	max.	min.	max.					
GA-SS-41C	3.2 (1/8")	0.5	1.6	3.28	3.38	5.4	6.05 ~ 6.65	1.02	1.87	2.36
GA-SS-42C		1.6	3.2			7.0				
GA-SS-43C		3.2	4.8			8.6				
GA-SS-44C		4.8	6.4			10.2				
GA-SS-45C		6.4	8.0			11.7				
GA-SS-46C		8.0	9.6			13.3				
GA-SS-48C		9.6	12.7			16.5				
GA-SS-52C	4.0 (5/32")	0.5	3.2	4.06	4.17	7.6	7.52 ~ 8.33	1.27	2.89	3.65
GA-SS-53C		3.2	4.8			9.2				
GA-SS-54C		4.8	6.4			10.8				
GA-SS-55C		6.4	8.0			12.4				
GA-SS-56C		8.0	9.6			14.0				
GA-SS-58C		9.6	12.7			17.1				
GA-SS-510C		12.7	15.9			20.3				
GA-SS-512C	15.9	19.1	23.5							
GA-SS-62C	4.8 (3/16")	0.5	3.2	4.88	4.98	8.3	9.04 ~ 10.03	1.52	4.23	5.34
GA-SS-63C		3.2	4.8			9.8				
GA-SS-64C		4.8	6.4			11.4				
GA-SS-65C		6.4	8.0			13.0				
GA-SS-66C		8.0	9.6			14.6				
GA-SS-68C		9.6	12.7			17.8				
GA-SS-610C		12.7	15.9			21.0				
GA-SS-612C	15.9	19.1	24.1							
GA-SS-614C	19.1	22.2	27.3							
GA-SS-616C	22.3	25.4	30.5							
GA-SS-82C	6.4 (1/4")	0.5	3.2	6.53	6.63	9.5	12.07 ~ 13.34	2.03	7.56	9.34
GA-SS-84C		3.2	6.4			12.7				
GA-SS-86C		6.4	9.6			15.9				
GA-SS-88C		9.6	12.7			19.1				
GA-SS-810C		12.7	15.9			22.2				
GA-SS-812C		15.9	19.1			25.4				
GA-SS-814C		19.1	22.2			28.6				
GA-SS-816C	22.3	25.4	31.8							



DIN Convention

Part No.	Size Ø	Grip Range		Hole Size		L	ØB	D	Shear (typical) kN	Tension (typical) kN
	nom.	min.	max.	min.	max.	max.	-	-		
GA-SS-3206C	3.2 (1/8")	1.0	3.0	3.3	3.4	6	5.8 ~ 6.5	1.2	1.87	2.36
GA-SS-3208C		3.0	5.0			8				
GA-SS-3210C		5.0	6.5			10				
GA-SS-3212C		6.5	8.5			12				
GA-SS-3214C		8.5	10.5			14				
GA-SS-3216C		10.5	12.5			16				
GA-SS-4006C	4.0 (5/32")	1.0	2.0	4.1	4.2	6	7.0 ~ 8.0	1.5	2.89	3.65
GA-SS-4008C		2.0	4.0			8				
GA-SS-4010C		4.0	6.0			10				
GA-SS-4012C		6.0	8.0			12				
GA-SS-4014C		8.0	10.0			14				
GA-SS-4016C		10.0	12.0			16				
GA-SS-4018C	12.0	14.0	18							
GA-SS-4020C	14.0	16.0	20							
GA-SS-4808C	4.8 (3/16")	1.0	3.0	4.9	5.0	8	8.5 ~ 9.5	1.6	4.23	5.34
GA-SS-4810C		3.0	5.0			10				
GA-SS-4812C		5.0	7.0			12				
GA-SS-4814C		7.0	9.0			14				
GA-SS-4816C		9.0	11.0			16				
GA-SS-4818C		11.0	13.0			18				
GA-SS-4820C		13.0	15.0			20				
GA-SS-4822C		15.0	17.0			22				
GA-SS-4825C		17.0	20.0			25				
GA-SS-4830C		20.0	25.0			30				
GA-SS-6412C	6.4 (1/4")	3.5	6.0	6.5	6.6	12	11.5 ~ 13.0	2.2	7.57	9.35
GA-SS-6415C		6.0	9.0			15				
GA-SS-6418C		9.0	11.5			18				
GA-SS-6422C		11.5	15.5			22				
GA-SS-6425C		15.5	18.5			25				



Can't find what you are looking for?

We can provide customized finishing and colouring.
Contact your nearest [Gripwell](http://www.gripwell.com.sg) team for assistance!